



OR*i*GINAL®

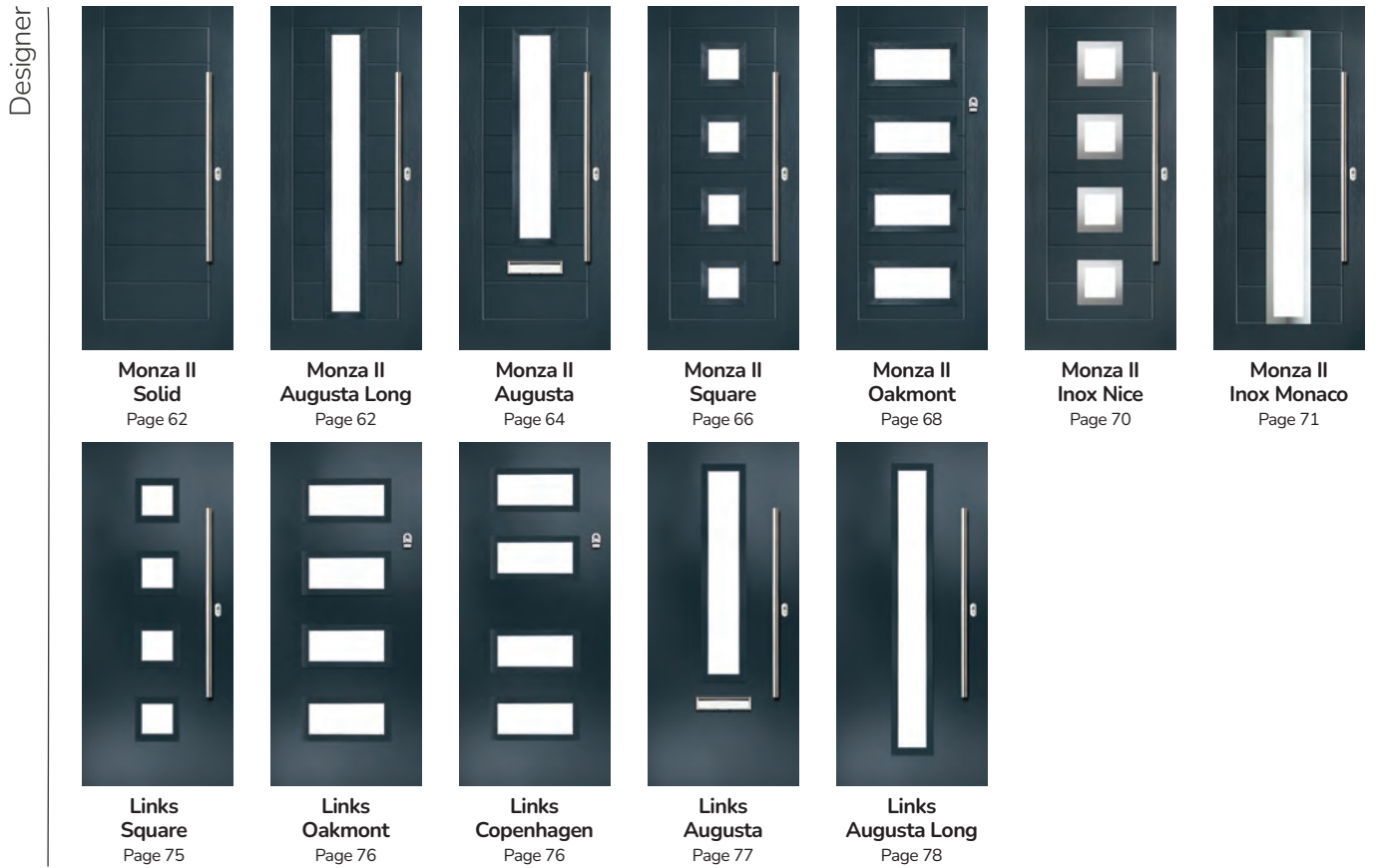
A NEW STANDARD IN DOORS

MONZA II

**DESIGNER**

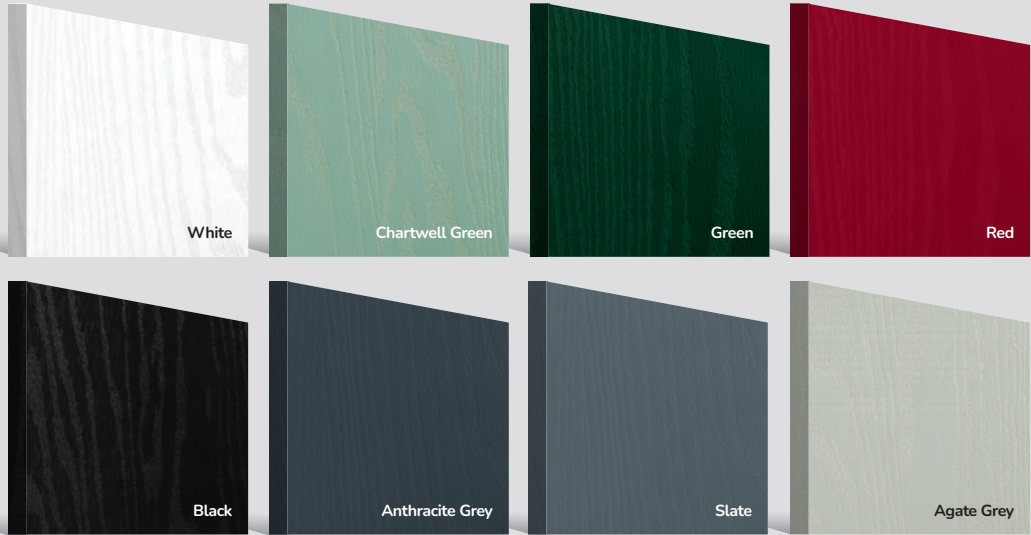
DOORS

A designer collection of unique doors: the smooth/etched LINKS door, glazed using the FLiP® Flat Stipple cassette choice, or the stunning Monza II door with our FLiP® Flat Grained cassette or Inox™ stainless steel frames.



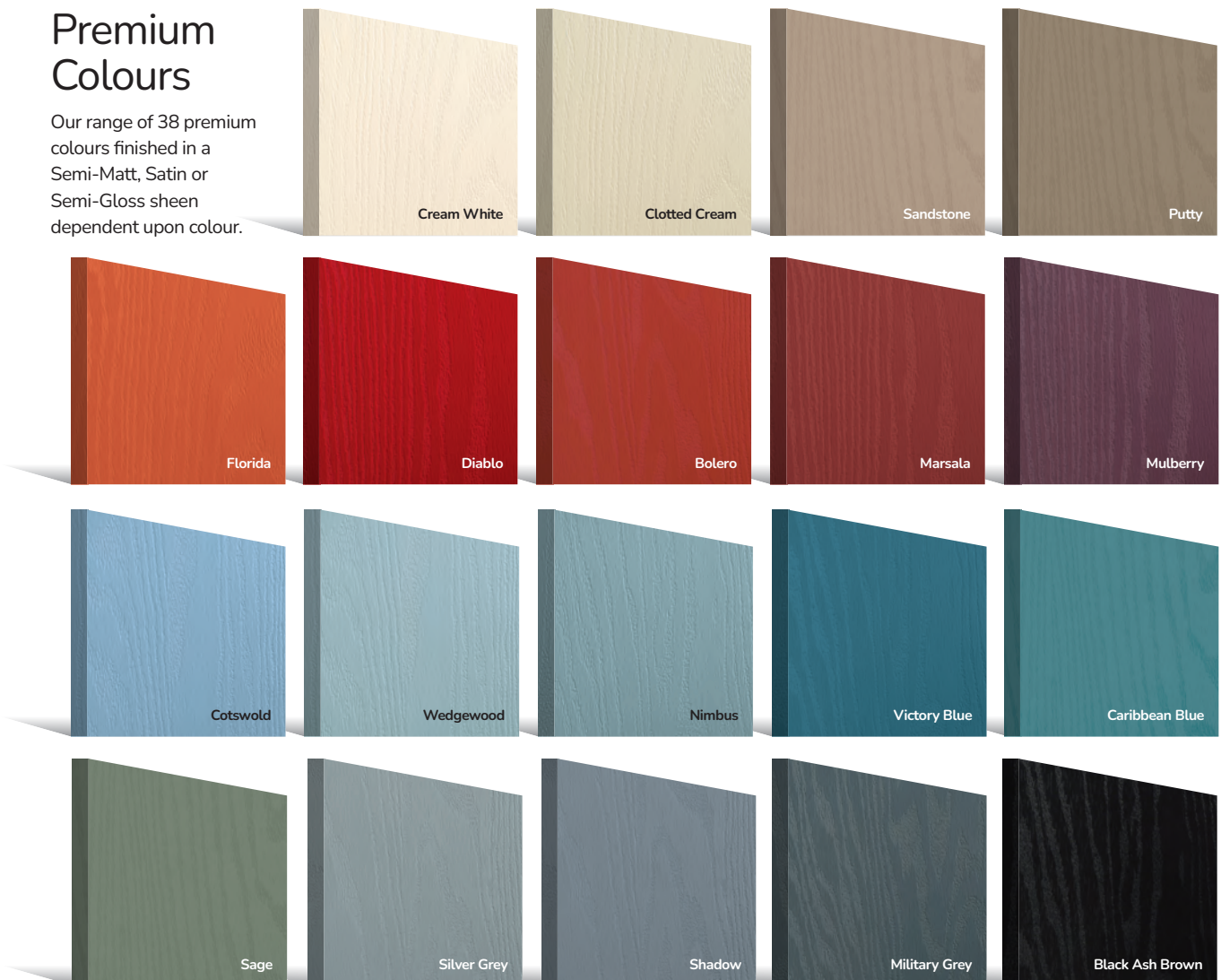
## Standard Colours

A range of 9 external colours with white interior as standard. Coloured both sides is a cost option.



## Premium Colours

Our range of 38 premium colours finished in a Semi-Matt, Satin or Semi-Gloss sheen dependent upon colour.



\*Some RAL colours containing luminous elements are unavailable



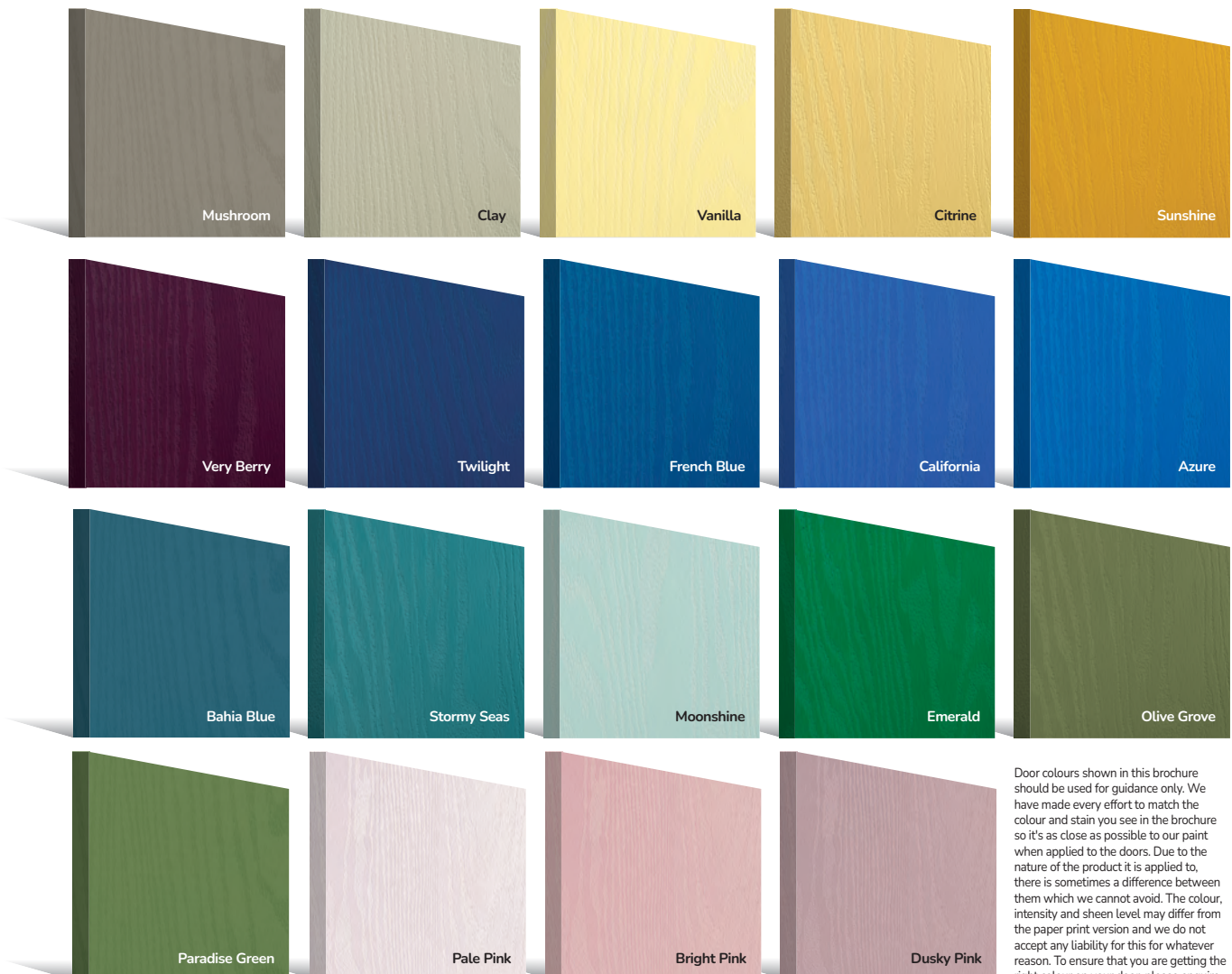
## PAiNT allows us to colour match anything

Yes. Anything.

With our high-performance paint technology we can offer any colour door you desire.

## PATiNA

An exciting range of 6 patina colours are available exclusively on the Monza II, Eaton, Knightsbridge, Tatton, Gleneagles, Oulton, Grove and Kings door styles.



Door colours shown in this brochure should be used for guidance only. We have made every effort to match the colour and stain you see in the brochure so it's as close as possible to our paint when applied to the doors. Due to the nature of the product it is applied to, there is sometimes a difference between them which we cannot avoid. The colour, intensity and sheen level may differ from the paper print version and we do not accept any liability for this for whatever reason. To ensure that you are getting the right colour on your door, please enquire about a colour booklet.

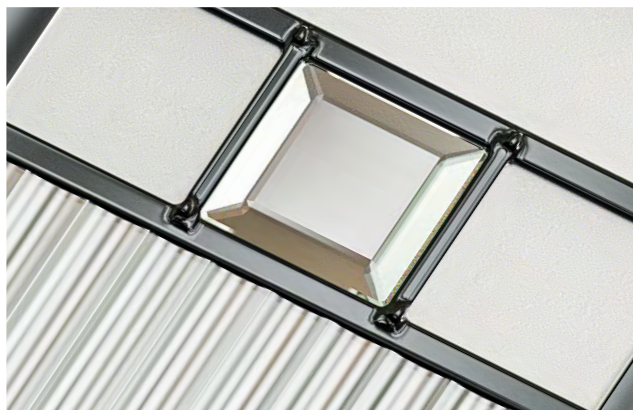
I GRAINED DESIGNER DOORS

# Monza II Augusta Long

A stunning modern design features linear etched detailing, a panelled moulding design and stunning full-length piece of glass for extra wow.



Door Colour: Agate Grey | Door Glass: Skyscraper



## Doorstyle Options



Augusta Long

Solid

Door Colour: French Blue

Left Option

Door Glass: Graphite



Door Colour: Mulberry

Right Option

Door Glass: Numbers\*



Door Colour: Dusky Pink

Left Option

Door Glass: Louisiana



Door Colour: Anthracite Grey

Right Option

Door Glass: Quantum



DESIGNER

ORIGINAL®

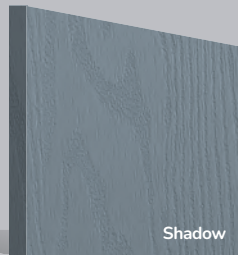
Trending Colours



White



Azure



Shadow



Sandstone



Door Colour: Clay

Left Option

Door Glass: Palazzo



Door Colour: Slate

Centre Option

Door Glass: Etch Lines



Door Colour: Silver Grey

Right Option

Door Glass: Lotus

\*Numbers is a bespoke glass design, customised to suit your number/ letter requirements. We use a standardised font but the position and scale may differ according to the number of characters requested.

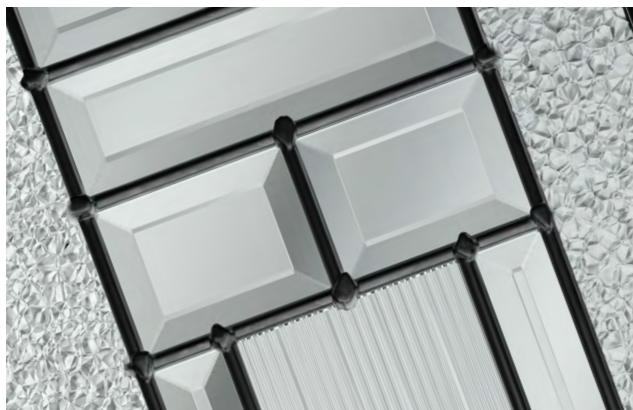
I GRAINED DESIGNER DOORS

# Monza II Augusta

Linear, angular and modern, Monza II Augusta is a stunning design with a focal point of glass that really steals the show.



Door Colour: Silver Grey | Door Glass: Louisiana



## Doorstyle Options



Augusta

Solid

Door Colour: Mulberry

Left  
Option

Door Glass: Quantum



Door Colour: Clotted Cream

Centre  
Option

Door Glass: Graphite



Door Colour: Shadow

Centre  
Option

Door Glass: Metropolis



Door Colour: Wedgewood

Right  
Option

Door Glass: Palazzo



DESIGNER



Door Colour: Alaskan Birch

Centre  
Option

Door Glass: Etch Lines



Door Colour: Military Grey

Centre  
Option

Door Glass: Deco



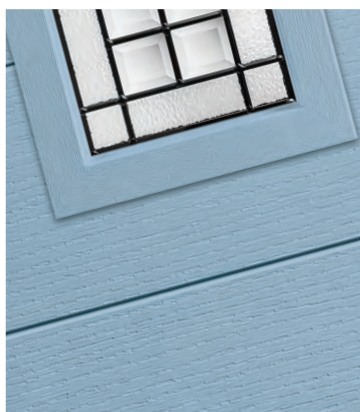
| GRAINED DESIGNER DOORS

# Monza II Square

This modern design is brought to life with clean lines and crisp edges, available with three or four glazing apertures.



Door Colour: Cotswold | Door Glass: Louisiana



## Doorstyle Options



Square 4

Square 3

Door Colour: Clotted Cream  
Door Glass: Artemis  
Left Option



Door Colour: Twilight  
Door Glass: Belgravia  
Centre Option



Door Colour: Nimbus  
Door Glass: Trinity  
Right Option



Door Colour: Agate Grey  
Door Glass: Skyfall  
Flush Option



DESIGNER



Door Colour: Sage  
Door Glass: Cubic  
Centre Option

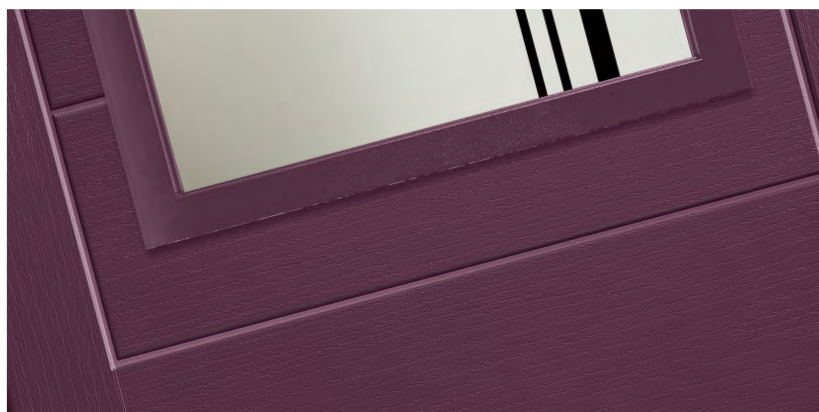
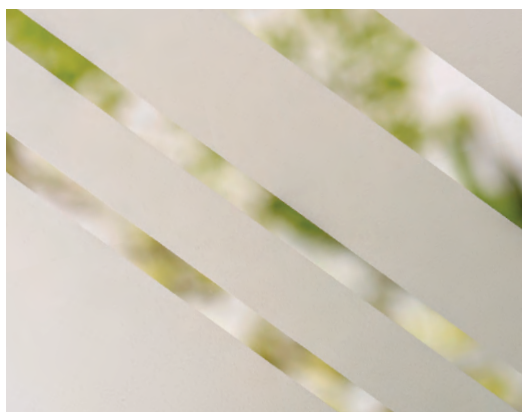


Door Colour: Stone Grey  
Door Glass: Space  
Centre Option

I GRAINED DESIGNER DOORS

# Monza II Oakmont

The Oakmont design beautifully complements the horizontal panels of the Monza II slab with bold rectangular glazing apertures.



Door Colour: Stormy Seas

Door Glass: Cubic



Door Colour: Florida

Door Glass: Skyfall



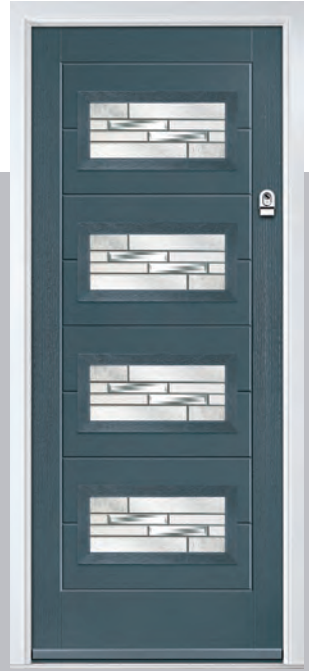
Door Colour: Azure

Door Glass: Tron



Door Colour: Slate

Door Glass: Lotus



DESIGNER



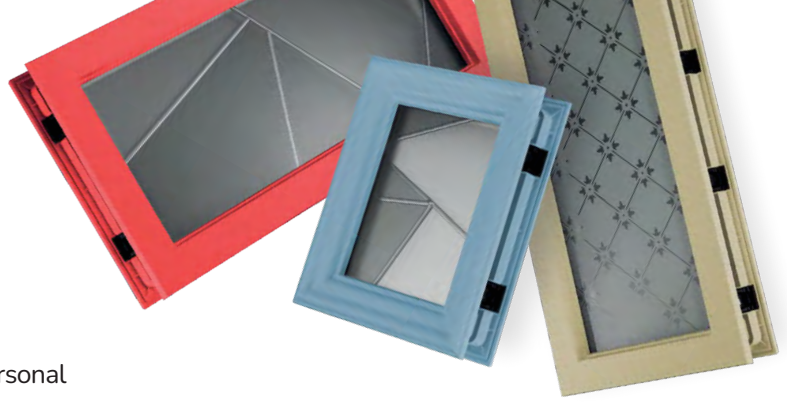
Door Colour: Moonshine

Door Glass: Belgravia



Door Colour: Citrine

Door Glass: Tectronic



## Decorative Glass Options

Decorative Glass transforms doors and makes a personal statement. We offer a range of styles to suit all budgets and tastes from contemporary styling to traditional choices. All our decorative glass is manufactured to the highest possible standards.

Traditional



Exclusive

### 4 Bevel

A simple glass design combining 4 clear bevelled glass squares and blackened coming that allows the light to flood.



### Artisan

Striking and flowing elliptical shapes join an array of crystal clear diamond bevels to create a dazzling effect. Glue chip surrounding textures provide a perfect contrasting finish.



Exclusive

### Astoria

An Edwardian era design created using a combination of rich coloured glass of varying texture. Encapsulated inside a triple glazed unit to combine traditional leaded glass with 21st Century performance.



### Athena

The Athena gracefully combines brilliant cut lines and a clean sandblast finish. The understated half glazed model is a great option as a simple glass design for a back door.



Exclusive

### Belgravia

A Victorian inspired repeat design with a delicate star motif set into a diamond pattern. The combination of etched and clear glass works beautifully well on this traditional timeless design.



NEW Exclusive

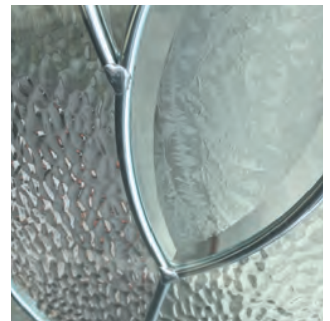
### Blossom

The beautiful bevelled heart and flower motif that is the centre piece of this design is reminiscent of the style created by Scottish designer and architect, Charles Rennie Macintosh. The combination of the central motif with subtle patterned glass makes this one of our most popular designs.



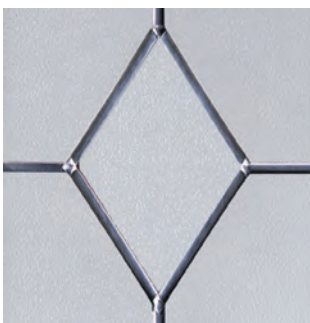
### Birchwood

The purity of this linear range draws its inspiration from Frank Lloyd Wright. Hints of cubism come together with leading edge glass technology to create a wonderful multi-textured finish.



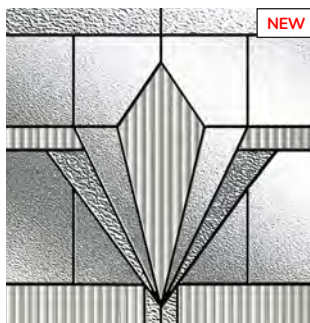
### Bloomsbury

An impressive large bevel cluster for those looking for a real feature statement. The Bloomsbury bevels will refract light beautifully and it's intricate detail is unsurpassed.



### Carrington

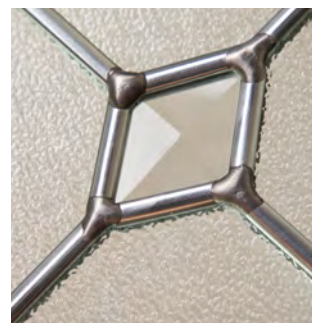
Only available in our Carnoustie door, this simple design and uses traditional lead on a stipple backing glass. The diamond lead design sits proud to the outer pane when glazed into the door.



NEW

### Casino

A 1930's inspired design utilising a range of clear glass textures to create a traditional design, particularly suited to inter-war properties.



### Diamonte

Offset diamond clear bevels of the Diamonte design provide a particularly modern finish. This contemporary design is finished to the highest standard with zinc and soldered joints.



NEW Exclusive

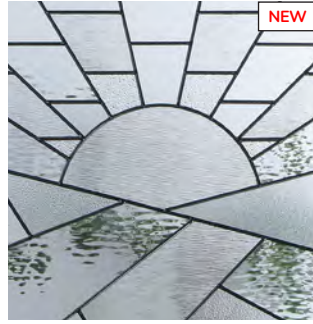
### Empire

A detailed yet subtle design with a clear repeating design motif set against etched effect glass. The classic 1920's Art Deco motif design suits a wide range of door styles and architectural styles.



**Essence**

A 1930's style decorative glass design combining a range of bold heritage colours and textured glasses with blackened coming and traditional soldered joints.



**Geometric**

An intricate design of crisp line and geometric shapes creates an eye-catching and unique design.



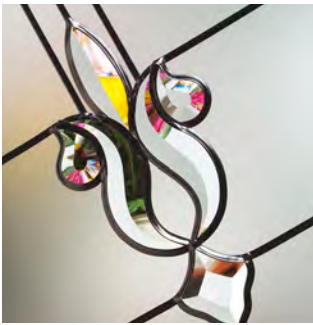
**Grange**

Our Bullion uses new techniques to create a very deep cut and impressive look. The circular bands create prisms of light and the design works very well in all styles of property.



**Hathaway**

Antique coloured glass is joined using a stunning black came and weld. All is encapsulated within the insulated unit for easy upkeep and to protect the design.



**Indulgence Grey**

The delicately shaped clear glass bevels glisten against the etched glass and create a look of understated and tasteful elegance.



**Jazz**

Inspired by the striking glass designs of the Art Deco period, the combination of glass textures, colours and flowing lines makes a bold statement and focal point for your door.



**Lanesborough**

Genuine coloured Spectrum Glass with blackened comes combine to create this stunning leadlight design, reminiscent of the Victorian era. With Lanesborough, you can now have all the benefits of traditional leadlights, with the performance and thermal properties you would expect in your door. **Available in 3 border colours: Amber, Blue or Green.**



**Lavish**

Our most traditional design, the Edwardian-era, Savoy glass option combines timeless green, amber and red colourways with on-trend fluted glass. The glass pieces are combined with a subtle black coming and encapsulated inside the glass unit.



**Numbers\***

A custom house number as a combination of clear and etched glass, is available on a range of standard glass sizes.



**Optimal**

Simulated divided lights create the look of individual panes of glass, whilst maintaining the performance benefits of a single double glazed unit.



**Onyx**

Beautifully handcrafted, the geometry of the brilliant cut recurring diamond motif, complemented by etch effect glass, bring privacy and security to your home.



**Prestige**

An ageless classic design with crystal cut bevels surrounded by a stipple backing glass. The design incorporates clean zinc lines and traditional welded joints.



**Speakeasy**

A unique custom house number design that allows you to put your stamp on this art deco-inspired piece.



**Stardrop**

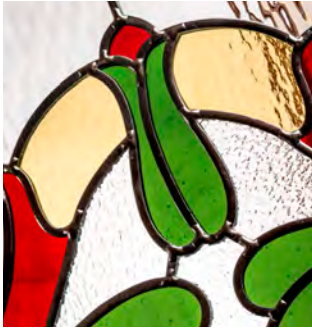
Stardrop features delicate star drops in a sparse pattern giving a high level of obscurity through the etched texture of the glass.



**Trio Diamonds**

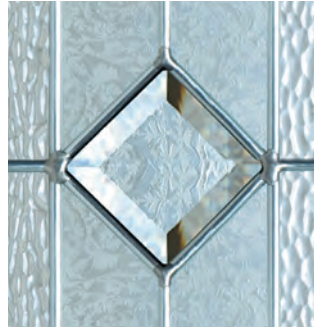
The finest quality of hand crafted decorative triple-glazing with a contemporary zinc finish. Luxury crystal cut bevels are sealed securely between 2 panes of safety glass to ensure good looks for many years to come.

\*Numbers is a bespoke glass design, customised to suit your number/ letter requirements. We use a standardised font but the position and scale may differ according to the number of characters requested.



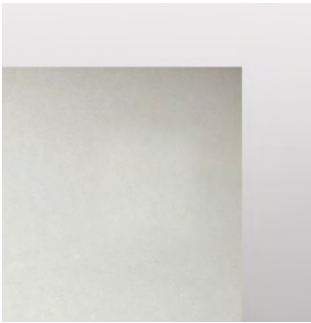
**Tiffany**

The Tiffany is reminiscent of designs used in the Victorian period. It uses a combination of vibrant coloured glasses against a background of softly rippled glass, with blackened cames.



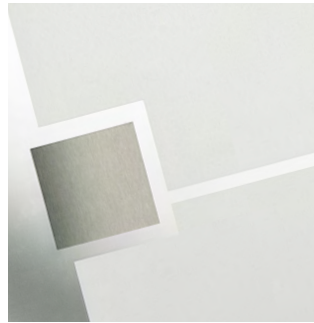
**Tranquility Zinc**

This extremely popular model combines multiple cut bevels and striking backing textures all encapsulated with the insulated glass unit.



**Artemis**

Simple but extremely effective. The Artemis features an etched glass centre with a clear surrounding border. A strong option for both traditional and modern homes alike.



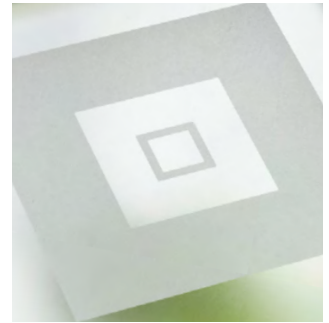
**Aspen**

This European style design is produced using high grade brushed stainless Inox elements, that are bonded to the centre pane of glass. This combination provides a unique contrast.



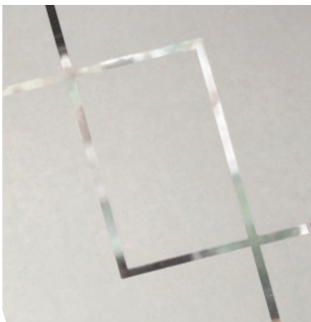
**Aztec**

A luxury triple glazed option, featuring modern black came with hammered and stipple backing glass. This crisp design offers very high levels of privacy and allows lots of light throughout any entrance.



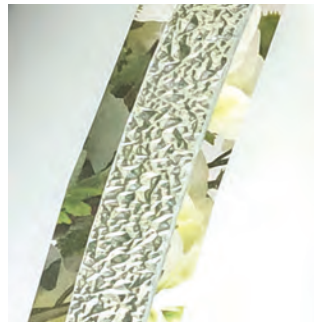
**Cubic**

The concentric squares inside a band of sandblasted glass is a subtle take on our Vector design. The Difuso glass ensures high levels of privacy whilst maintaining light transmission.



**Deco**

Exclusively commissioned by glass artisans, Deco uses a sophisticated frosted backing glass coupled with clear dividing lines that create a simple, elegant and highly desirable contemporary design.



**Halo**

A stunningly simple design, Halo is created using hand cut glass centres, that are polished and bonded within a clear border. The contrast offers a beautiful combination.



**Luxor**

Intricate laser cut brushed stainless steel is inset within each triple glazed panel and located with zinc joining strips. A heavily embossed backing glass offers good levels of privacy.



**Palazzo**

Inspired by the Prairie design movement, Le Moyne combines simple bevel glass pieces, lineal design and chevrons with on trend Fluted glass to create a stunning contemporary design.



**NEW**

**Skyfall**

Minimalistic yet full of modern impact, Skyfall features a combination of line and dot work to create an intricate and eye-catching design.



**Mercury**

A modern clear design laced into an etched backing glass with feature clear glass bevels. Mercury has a chic look with the glass bevels sitting proud to the outer glass pane.



**Milan**

A modern yet understated, sleek decorative door glazing. A blend of deep cut glass bevels and 'reed' highly obscure backing glass, combined perfectly to reveal an extremely alluring finish.



**Panama**

A sophisticated, contemporary design incorporating various glass textures with clear 'came' lines. Panama is a twist on lineal Art Deco period style.

**NEW Exclusive**



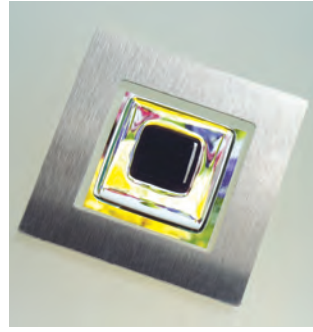
### Synergy

A modern twist on a traditional technique, Synergy combines hand-cut textured glass pieces, contemporary fused glass elements and polished zinc coming.



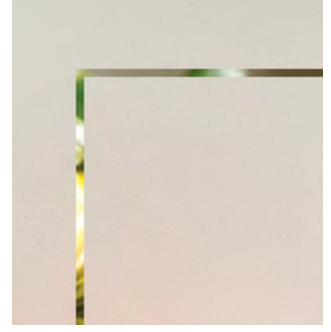
### Tokyo

Tokyo is designed to focus on continental styling that suits the door that surrounds them. Contemporary, clean, simple etched designs that have proved very popular.



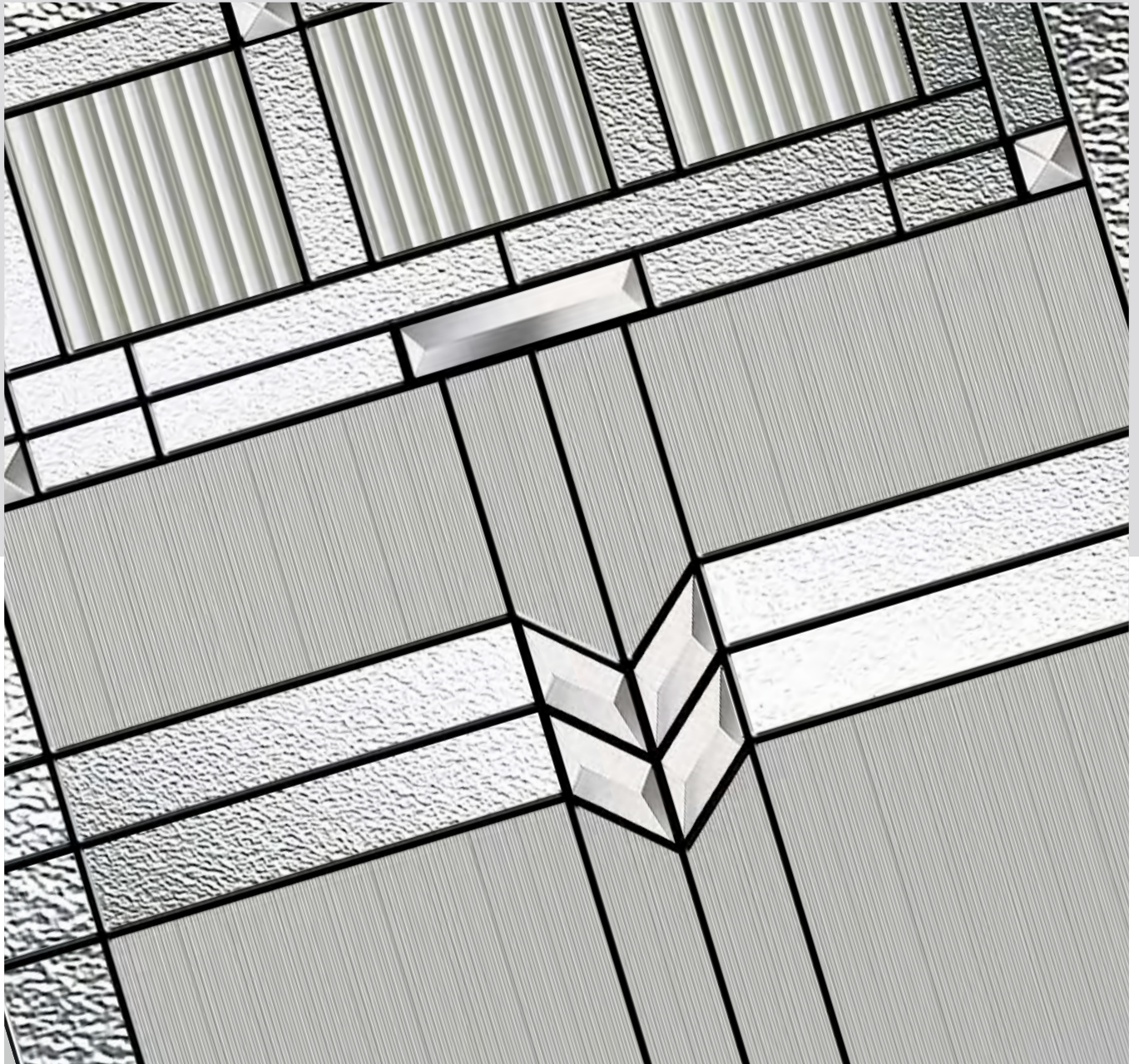
### Vector

By combining Fusion glass tiles with small stainless steel elements and etched glass, Vector is a strikingly modern glazing option that is ideally suited for contemporary doorsets.



### Victorian Border

Obscure delicately sandblasted glass combined with a crisp clear keyline gives Victorian Border a classical simplicity that is equally in place in contemporary and traditional doors.







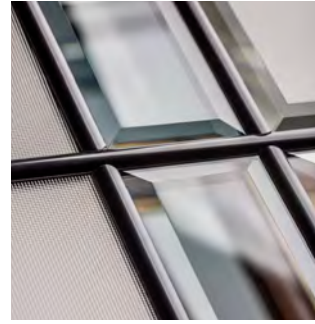
**Bold Pink**

Inspired by Pop Art and developed into a decorative glass design unlike anything else available by our design consultant Jeyda, Bold Pink makes the ultimate statement.



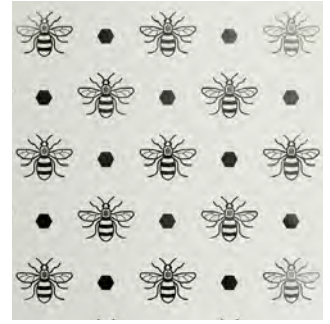
**Etch Lines**

The simplicity of the clear lines against the etched effect gives a truly contemporary, minimalist look that combines privacy and design.



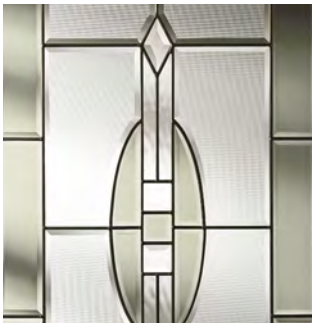
**Graphite**

Graphite is modernity at its best. Using the latest weld-free coming technology in stunning matt black, it is a modern take on decorative glass which will complement any contemporary door.



**Hive**

Hive has always been an icon of hard work, but more recently, promotes the ideal of togetherness. It's roots have been based in Manchester for centuries – but can be seen across the UK as a symbol of nature.



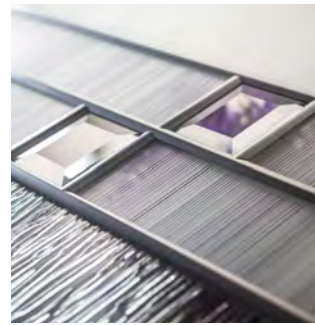
**Impression**

Stunning black chrome coming combined with satin and grey bevelled glass pieces, Impression makes a striking statement encapsulated inside a double glazed unit for easy cleaning.



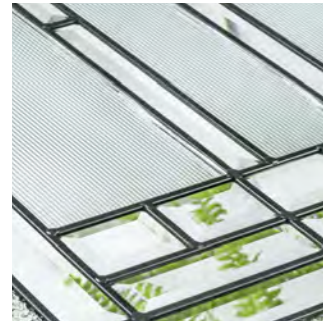
**Kew**

Kew combines intricate bevel work and soft water glass against a background of obscure etched glass. The central flower motif will make a stunning focal point for any door.



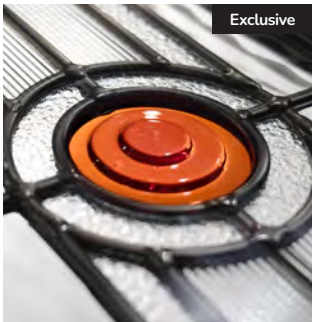
**Lotus**

Using the 'weld-free' chrome finish aluminium comes, combined with bevelled glass pieces and etched Millenium glass, Lotus is a truly stunning yet simple design.



**Louisiana**

The complex bevelled design combined with stunning textured glass creates a design with undoubted kerb appeal and 'Wow Factor'.



**Metropolis**

Metropolis is inspired by the Art Deco designs of the 1930's and, with its bold design and colourways, it looks equally at home in both traditional and more modern door settings.



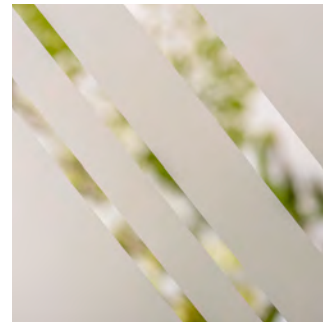
**Peak**

From the unique Jeyda design collection, Peak is a fabulously unique design with an array of colours and textures combined with fine black lines.



**Quantum**

Combining our soft acid etched Difuso glass with the deeper texture of the sandblasted design creates a modern, striking glass perfectly suited for contemporary doors.



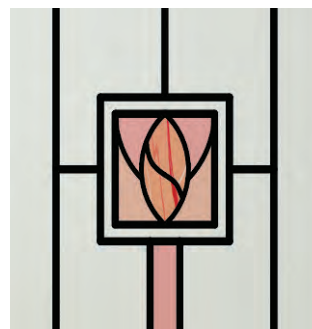
**Skyline**

A simplistic yet strikingly modern glass design, Skyline uses a combination of multi-width clear lines against a background of delicately sandblasted glass.



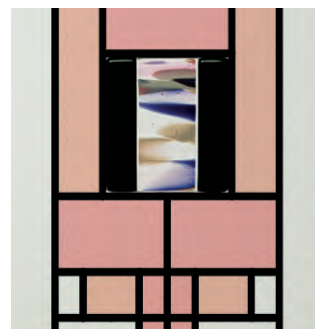
**Skyscraper**

Utilising flat black coming, on trend Fluted glass and simple bevelled glass pieces, the glass design features many of the elements featured in 1930's Manhattan architecture and now seen in the Industrial-Heritage style revival.



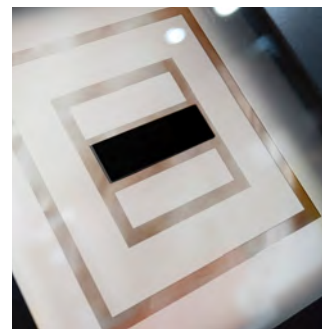
**Soul Pink**

The combination of delicate pink colours with varying levels of transparency, combined to create a modern design with a nod to the mid-century modern design style.



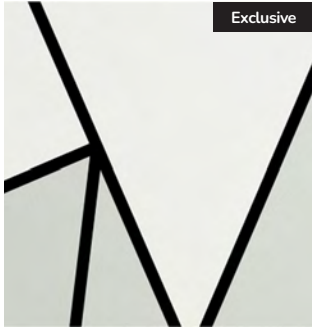
**Spirit Pink**

Bold colours and textured glass effects are combined with a beautiful, fused glass motif.



**Space**

Minimalist and stylish, Space is a modern geometric design of an etched glass design, offset with 3-dimensional black glass elements, encapsulated inside a triple glazed unit.



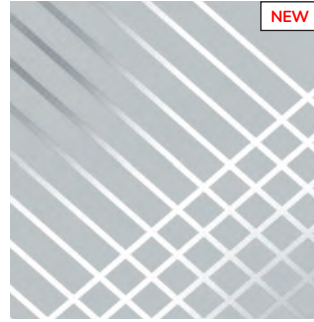
**Tectronic**

A truly contemporary design from our in-house designer Jeyda. The geometric shapes are combined with neutral greys and black glass colours to create a design unlike anything else on the market today.



**Trinity**

The multi-width lines of Difuso soft acid etched glass contrast beautifully with the deeper texture of the sandblasting to create a truly modern design.



**Tron**

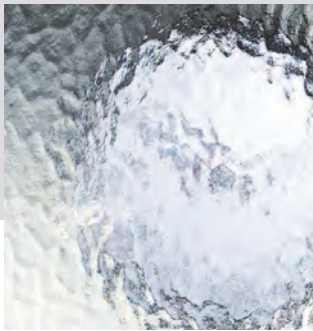
Simple yet effective, Tron features a linear design that provides a minimalistic intricacy that delivers real impact in many door designs.



**GLAZING**

**Clear or Obscure Glass Options**

The majority of our door styles are also available in a standard range of 4 carefully Laminated Low-E patterned glass options or Laminated Low-E clear glass.



**Minster**

Minster pays homage to historic hammered glass and is most suited to period homes or more traditional door styles.



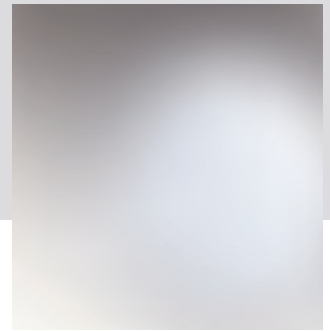
**Stippolyte**

The timeless appeal of this stipple effect glass makes it one of our most popular options. The surface texture offers very high levels of obscurity and the design suits most door and house styles.



**Cotswold**

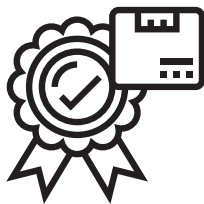
A more heavily textured pattern resembling water cascading over a surface. It is one of our most popular patterns and is especially suitable for doors that require higher levels of privacy.



**Satin**

Satin glass is an acid etched glass that offers high levels of privacy. It is a very neutral finish similar to sandblast and is ideal for use in both traditional and contemporary doors. **Now available for all door styles containing grids.**

# Features & Benefits

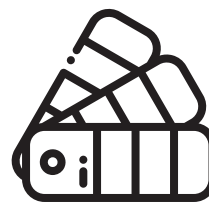


## Performance

---

The ORiGINAL® composite door offers a truly appealing entrance for any home, with a high-definition smooth or grained GRP outer skin that will look stunning for years to come.

The door offers stability from the elements with protection against any water ingress. The inner core is manufactured from high density polyurethane foam, which offers exceptional thermal efficiency and will help to reduce energy bills in the home in comparison with any other door on the market.



## Colours

---

With our high-performance paint technology, we can offer any colour door which can even complement the colour options on frames. This provides a fantastic choice for your home. In most cases the doors come in white as standard on the internal side, however, the options are endless, so get creative with colour and choose something different for the internal side.

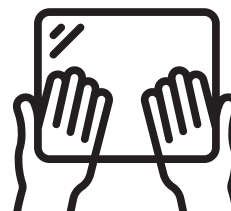


## Security

---

We take security very seriously. The ORiGINAL® composite door comes with security features which stand up to current and future security standards, including PAS 24 in line with Approved Document Q. We recommend the use of multipoint locks (locks should always be engaged so the door is not left just on the latch) and security hardware including TS007 high security cylinders and handle combinations and TS008 letterplates.

A slam shut lock option is available for a contemporary look, however, please note that slam shut locks should be used with caution as the operation of these may not suit certain individuals. We recommend an aluminium lock strip is used in conjunction with heritage locking systems.



## Glass and Glazing

---

The visual impact of your door is enhanced by your choice of glass. Depending on the style, the units will be either a double or triple glazed unit. The FLiP® glazing cassette system passes PAS 24:2016 security attack tests.

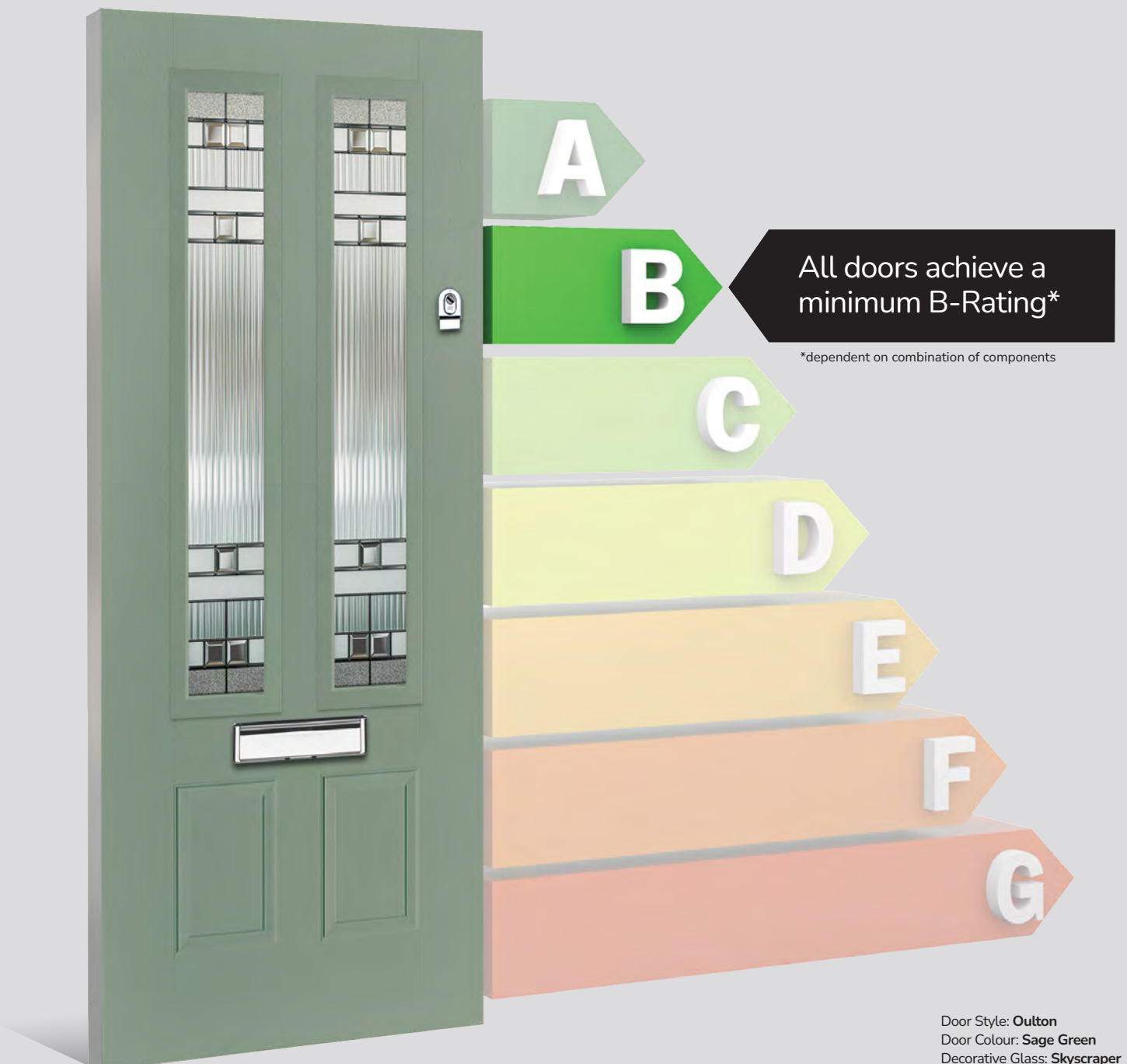
All glass units supplied are laminated & comply with Approved Document Q specification that the glazing unit needs to contain one pane of class P1A (EN356) glass, which must be 6.8mm, security laminated.

# Thermal Performance

The ORiGINAL<sup>®</sup> composite doors are thermally efficient by design.

The warm foam core allows the door to have a significantly better 'U' value than any other option on the market, meaning your entranceway is more thermally efficient with ORiGINAL.

Our full door range complies with Document L and the requirements of the current Building Regulations.



# Door Finishes

The ORIGINAL® composite door is the minimal-maintenance alternative to traditional door materials. It has reinforced GRP skins, finished in either woodgrain or an exclusive smooth/etched finish that perfectly matches aluminium and delivers kerb appeal for any property. The ORIGINAL® door outperforms other market alternatives with outstanding thermal performance. Inside, the PU foam core reduces heat loss and is encased by an LVL (Laminated Veneer Lumber) subframe to provide strength and rigidity. The door protects the home from the elements and will have minimal thermal expansion and contraction rates under extreme temperature variations which is perfectly normal.

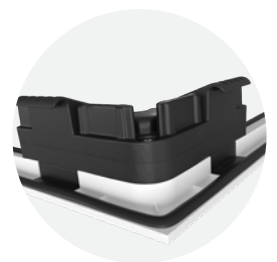


## Exclusive Glazing Cassettes

The ORIGINAL® Composite door range uses FLiP®, an exclusive glazing cassette system with revolutionary Foam in Place technology. We also offer the unique Inox™ cassette system finished in stainless steel or black matt finish.

## FiP® Technology

The pre-applied foam in place technology creates a superior seal that prevents any water ingress. FLiP® achieved over 1000pa through the glazing aperture during weather testing.



| FLiP® Standard | FLiP® Flat Grained | FLiP® Flat Stipple | FLiP® METALLiC | Inox™ Stainless Steel | Inox™ Black Stainless Steel

### Standard

The traditional choice with a moulded design and a woodgrain finish to suit a more conventional door design.

### Flat Grained

Be eclectic by combining a woodgrain finish with a modern squared-off flat profile that compliments a contemporary Flush or designer Monza II door.

### Flat Stipple

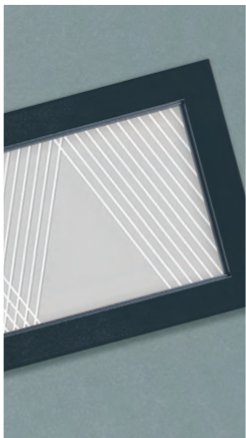
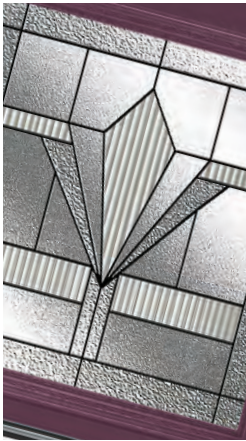
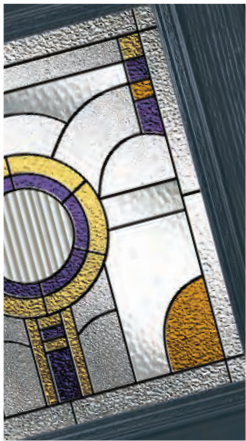
The modern one, with a squared-off flat profile and smooth stippled finish that perfectly matches Links, our aluminium-effect composite door.

### Inox™

For a more European look, choose the stunning Inox™ stainless steel frames.

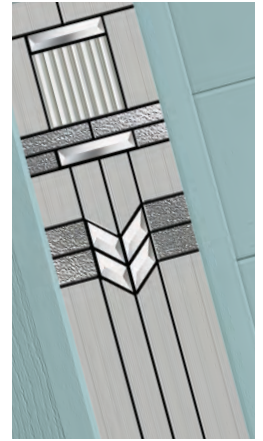
## Decorative Glass Availability

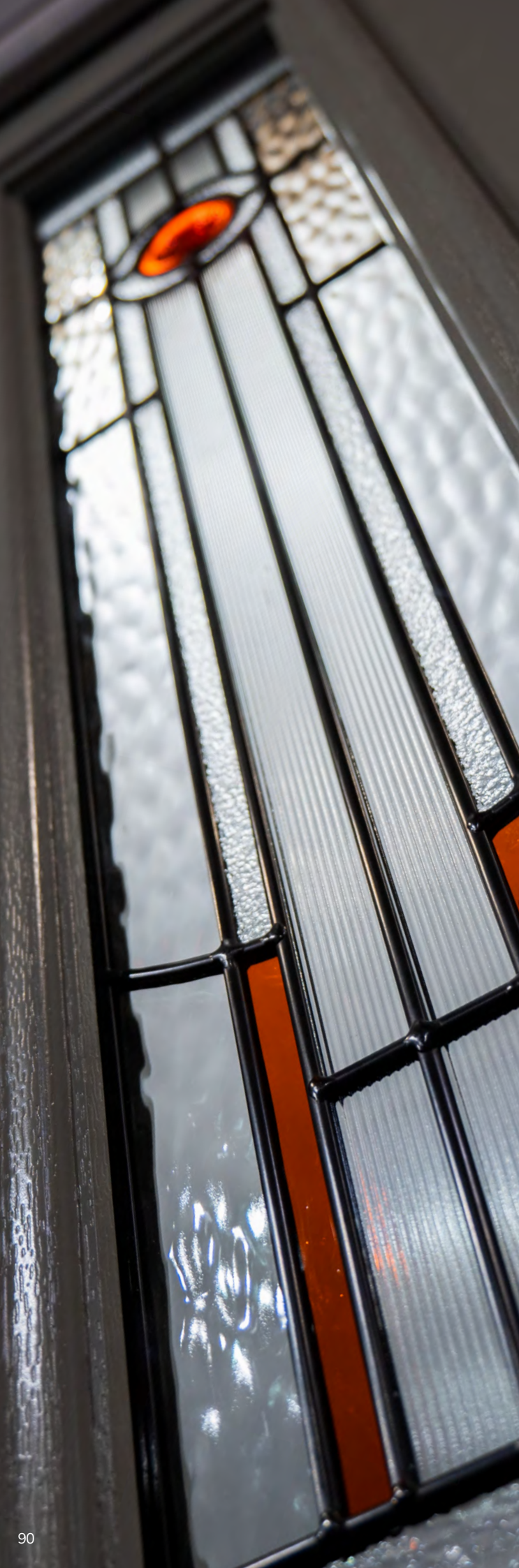
Our multitude of decorative glass designs and options, paired with a wide range of door styles enables you to personalise your door effortlessly.



TRADITIONAL	Carnoustie / Knightsbridge	Birkdale	Penina	Pinehurst	Troon	Muirfield	Riviera	Portrush	Sunburst	Lytham / Tatton	Lytham / Tatton 4Grid	Lytham / Tatton 9Grid	Turnberry	Turnberry 11Grid	St Andrews	Belfry 1 & 3	Pevero	Sunningdale	Eaton / Merion	Eaton / Merion 4Grid
4 Bevel Square				■												■	■		■	■
Artemis	■	■	■	■	■	■	■	■								■	■	■	■	
Artisan	■	■	■																	
Astoria	■	■	■																	
Athena																				
Aztec													■							
Belgravia	■	■	■	■	■	■										■	■	■	■	
Birchwood	■	■	■		■	■	■	■											■	
Bloomsbury	■	■	■			■		■		■			■							
Blossom																			■	
Bold Pink										■										
Carrington	■	■	■																	
Casino											■									■
Cubic	■	■	■	■		■										■	■			
Diamonte	■	■	■																	
Empire	■	■	■																	■
Essence														■						
Geometric																				■
Grange																■	■			
Graphite	■	■	■	■												■	■	■		
Halo																				
Hathaway					■	■	■	■							■				■	
Hive																			■	
Impression	■	■	■		■	■	■	■		■					■				■	
Jazz																				■
Kew	■	■	■												■				■	
Lanesborough	■	■	■																	
Lavish																				■
Louisiana	■	■	■	■	■	■				■					■	■	■	■	■	
Louisiana Rose Gold	■	■	■		■	■													■	■
Luxor																				
Mercury																				
Metropolis	■	■	■		■	■				■									■	■
Milan	■	■	■																	
Numbers							■	■		■									■	
Onyx													■							
Optimal									■		■	■		■						■
Palazzo	■	■	■			■				■										■
Panama															■					
Peak								■												
Prestige	■	■	■		■	■	■	■											■	
Skyfall				■												■	■			
Skyscraper	■	■	■							■					■					■
Soul Pink	■	■	■																	
Space				■												■	■			
Speakeasy																				■
Spirit Pink	■	■	■																	
Stardrop							■	■											■	
Synergy													■							
Tectronic	■	■	■		■	■													■	
Tiffany	■	■	■												■					
Tranquility Zinc	■	■	■	■	■	■							■		■	■	■			
Trinity				■												■	■			
Trio Diamond	■	■	■		■	■	■	■		■									■	
Victorian Border	■	■	■	■	■	■	■	■		■			■		■	■	■	■	■	■

CONTEMPORARY	Gleneagles	Gleneagles 4Grid	Kings	Grove	Oulton	Charitilly	Seminole 3 / 4 / 5	Vilamoura	Oakmont / Copenhagen	Augusta	Augusta Long	Square 3 & 4	Inox Nize	Inox Lyon	Inox Munich	Inox Monaco	Inox Barcelona	FLIP Barcelona
4 Bevel Square																		
Artemis			■		■	■	■	■	■	■	■	■						■
Aspen															■			
Athena											■							
Belgravia			■				■	■	■			■						■
Birchwood			■			■	■	■										■
Bloomsbury			■	■		■	■	■										■
Cubic			■				■	■	■			■	■	■		■		■
Deco					■					■	■							
Etch Lines					■					■	■							
Graphite	■		■		■		■	■		■	■	■	■	■	■	■		
Halo																	■	
Hathaway																		■
Impression	■		■	■	■	■	■	■		■	■							■
Indulgence Grey	■																	
Lanesborough											■							
Lotus	■				■				■	■	■							
Louisiana	■		■	■	■		■	■		■	■	■						■
Louisiana Rose Gold	■		■		■		■	■		■	■							■
Luxor					■					■	■				■	■		
Mercury							■						■	■				
Metallic									■									
Metropolis			■	■	■		■	■		■								■
Numbers					■	■				■	■							
Optimal		■																
Palazzo			■	■	■		■	■		■	■							■
Peak						■												
Prestige			■			■	■	■										■
Quantum					■					■	■					■		
Skyfall												■						
Skyline													■	■				
Skyscraper	■				■					■	■				■	■		
Space												■	■					
Stardrop						■												
Synergy	■														■			
Tectronic			■				■	■	■		■							■
Tiffany											■							
Tokyo																	■	
Tranquility Zinc			■				■	■				■						■
Trinity											■	■	■	■				
Trio Diamond			■	■		■	■	■			■							■
Tron									■									
Vector													■					
Victorian Border	■		■	■	■	■	■	■	■	■	■	■						■





DESIGNER	Monza    Augusta Long	Monza    Augusta	Monza    Square 3 & 4	Monza    Oakmont	Monza    Inox Nice	Monza    Inox Monaco	Links Square 3 & 4	Links Oakmont/ Copen	Links Augusta	Links Augusta Long
4 Bevel Square			■				■			
Artemis	■	■	■				■		■	■
Athena	■									■
Belgravia			■	■			■	■		
Cubic			■	■	■	■	■	■		
Deco	■	■							■	■
Etch Lines	■	■							■	■
Grange										
Graphite	■	■	■		■	■	■		■	■
Impression	■	■							■	■
Lanesborough	■									■
Lotus	■	■		■				■	■	■
Louisiana	■	■	■				■		■	■
Louisiana Rose Gold	■	■							■	■
Luxor	■	■				■			■	■
Mercury					■					
Metallic				■				■		
Metropolis		■							■	
Numbers	■	■							■	■
Palazzo	■	■							■	■
Quantum	■	■				■			■	■
Skyfall			■	■			■	■		
Skyscraper	■	■				■			■	■
Skyline				■	■			■		
Space			■		■		■			
Tectronic	■			■				■		■
Tiffany	■									■
Tranquility Zinc			■				■			
Tron				■				■		
Trinity	■		■		■		■			■
Trio Diamond	■									■
Vector					■					
Victorian Border	■	■	■	■			■	■	■	■



# Technical Specifications

## ORiGINAL® 44mm Door

- > Grained GRP skins are available in a wide variety of styles and colours including wood stains
- > Stiles and Rails are manufactured from a water-resistant polymer
- > The key material components of an ORiGINAL foam filled door are sustainably sourced LVL, recycled PVC and foam.
- > Superior heat and sound insulation
- > Complimentary choice of grained reglazeable cassettes
- > Doors meet the test standard for PAS:24 and Secured by Design
- > Q-Marked with full manufacturing traceability



## Care and Maintenance

Your new door should keep you safe and secure for years to come however with all products and especially those that are exposed to the elements we recommend that you carry out a care and maintenance routine.

- > Door frames should be washed with warm soapy water.
- > The door leaf should only be cleaned using warm water or non-aggressive composite door wipes. No solvent-based product or abrasives should be used as these will damage the surface of the skin.
- > External glass should be cleaned with warm soapy water and cleaned with a proprietary glass cleaner.
- > Maintenance of the door may be required to maintain any guarantees from the installer. Hinges should be lubricated with engineering oil. Cylinders can be lubricated with Teflon-based products only, as other oils may cause degradation. If necessary, a small amount of lubricant can be applied to the moving parts such as letterplates, handles and knockers.

## Glass

All the double and triple glazed units used in our doors are manufactured to the highest standard and come with internationally recognised accreditations for performance, strength and thermal efficiency.

### High Performance Secure Units

All units are made laminated to comply with Document Q. All units are manufactured to the EN1279 standard for quality of seal and life expectancy

### Thermally Efficient

All the clear or obscure glass units in our range have insulating features as standard. They are manufactured using low emissivity glass and the airspace is filled with Argon gas to give industry leading thermal efficiency.

In addition, we only use warm edge spacer systems.